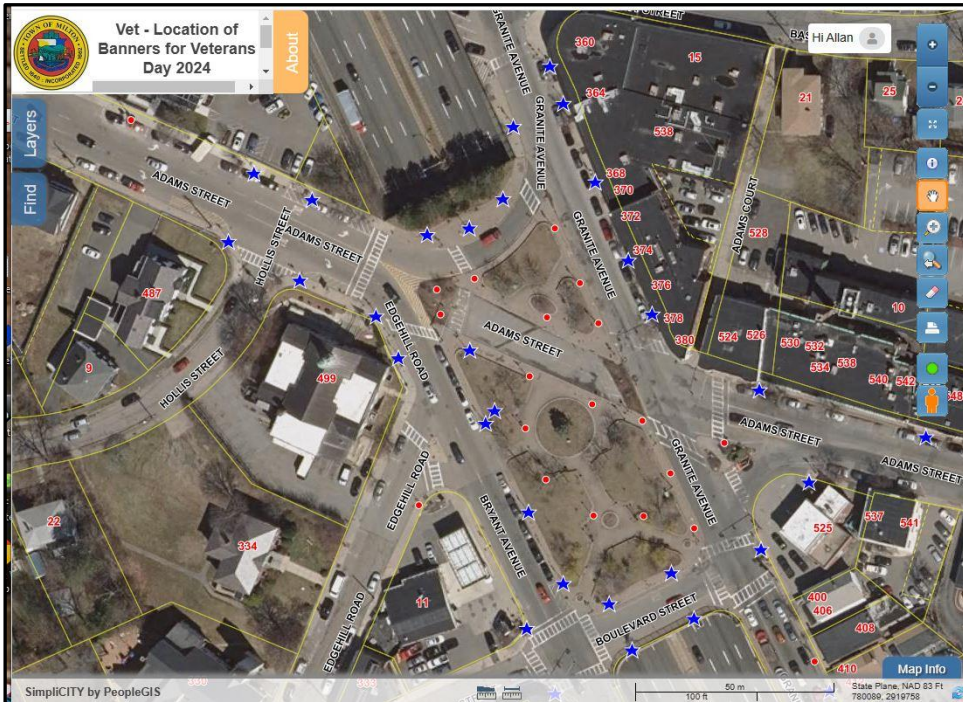


Instructions for using the online Veterans Banner Mapper



- Zoom In
- Zoom Out
- Zoom Map Extent
- Identify Tool
- Pan Tool
- Zoom In (to Location)
- Zoom In (Draw Box)
- Clear Selection
- Print Map Tool
- Google Street View Tool

To open the online mapper, select this link: [Veterans Online Mapper](#)

Using the mapper: select the link above to open the map, a message window will appear on the mapper.
To close it, select the “X” in the upper right corner of the message.

Three ways to explore the banner locations

1. To navigate through mapper: use the **Zoom & Pan** tools to move about the map (upper right **Tool Menu**) or place cursor on a location and use scroll wheel to zoom in/out. Place your cursor on a blue star (*Make sure the **Identify** button is selected*)
 The Vet’s info will appear under **Detail Information**.



If you select the banner image it will open and expand.
 Right click on it to save it.



2. To Find a Veteran’s banner by name: Go to the **Find Tab** (upper left) and select it.

When the **Find Properties** window opens **start to type the last name** of a veteran (i.e. “Peters”). The window will expand, and the veteran’s information will populate in the **Detail Information** section.

The map will **zoom** to the location of the banner (pole) and the “Blue Star” will have a red dot on it to show the banner you (have selected) are interested in.



3. Quick access to veteran’s information (hover). Once the map is open and zoomed into an area with banners (blue stars). Place the cursor over a banner location (hover over it) and a label will appear with the information about that veteran. (Again, make sure the **Identify** button is selected)

The **Identify button** when selected will turn from a **blue background** to **orange**.



If you have any questions regarding the online mapper, please contact Allan Bishop at (617) 898-4973